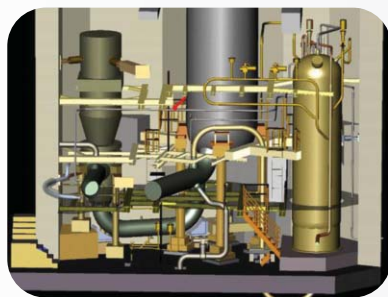


Certified by **AECOM IND** 50301-001

Aecon-Wachs is a total solutions provider.

We offer services based on many decades of experience, in-depth knowledge, and a broad range of qualifications to support nuclear government construction, maintenance, and decommissioning.



Aecon-Wachs offers turnkey Engineering, Manufacturing, Field Services Teams and Equipment to support Nuclear Decommissioning Projects.

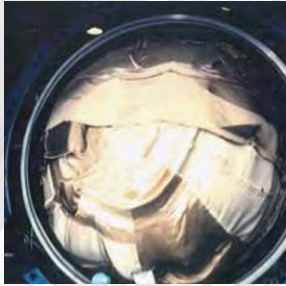
SERVICES OFFERED:

- LCR (Large Component Removal)
- Union & Non-Union Project Teams
- Construction Management
- Specialized Cutting Equipment
- Professional Staffing
- Equipment Design
- Pool to Pad Services
- Cold & Dark
- Decontamination
- ISFSI Expansion
- Demolition Preparation
- System Isolation
- Vent, Purge, Drain of Piping
- ISO & Decommissioning of Electrical Systems
- Install of Temporary Utilities (air, water, electric)
- Lifting & Rigging

AECOM-WACHS

531 Performance Drive, Jackson, SC 29831

803.508.7308 | aecon-wachs.com



Nuclear Projects

Our machine tools find many uses in nuclear power plants for construction, maintenance, power uprates or decommissioning – they are very versatile. Our machine tools deliver precision results onsite, which saves time and money on maintenance and outages.



Engineered Products

Our technical services have the ability to design and manufacture semi-customized and fully customized machines and products built for a specific application or project. We partner with many of the industry's leading firms to create products ranging from simple adaptations of standard tooling and machines, to the most complex systems.



Onsite Machine Tools

Our tools enable the team to provide world-class service, to develop ideal solutions, and to tackle any challenge. We utilize a wide range of tools that includes the split frame rotating ring machine, precision socket weld removal, the EP 424 End Prep Beverler, the foreign materials exclusion chipless cutting system, guillotine pipe saws, and small diameter bevelers among many others.



Nuclear Applications

While cutting and beveling pipe and tubes for weld preparation is the most common task of our standard machine tools, our products find many usages in nuclear decommissioning for segmenting critical component systems.

AECON-WACHS

531 Performance Drive
Jackson, SC 29831

803.508.7308
aecon-wachs.com

GEORGETOWN, KY
HUNTSVILLE, AL
EVANSVILLE, IN
JACKSON, SC
SEATTLE, WA